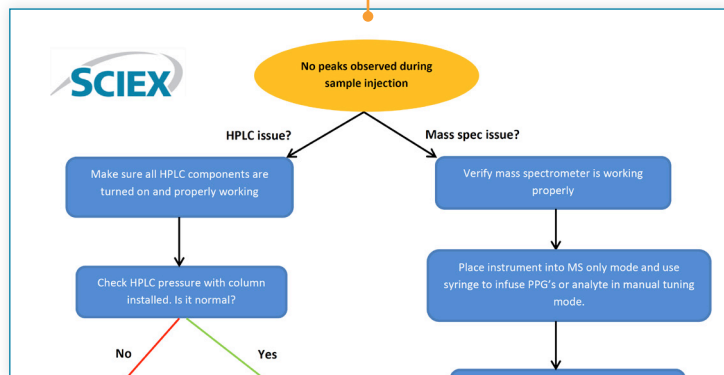




Learning Hub samples snapshots

Each course at the SCIEX Learning Hub is a unique experience. Below you will find a few samples of the learning tools you may encounter while taking a course. You will notice some great reference materials that you will be able to keep for years to come.

Troubleshooting tree



Lab exercise

MS Tune for ZenoTOF 7600 and X500 QTOF systems

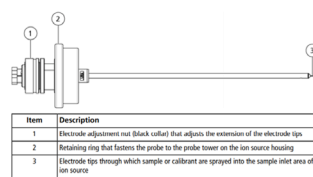
Overview of the calibration and tuning components

The Turbo V ion source on your instrument can accommodate ESI and APCI probes and is able to perform experiments in both positive and negative mode.

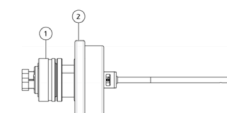
Table 1: Required calibrants for ZenoTOF 7600 and X500 QTOF systems

Calibrant	Part number
Positive APCI solution	35042914
Negative APCI solution	5042915
Positive ESI solution	5042910
Negative ESI solution	5042913
Calibration solution suite (complete calibration solution set)	5043301

Twin ESI probe



Twin APCI probe



Quick status check option

1. Make sure the appropriate calibration solution is in the CDS, and that it has enough volume and is screwed in place, but not overtightened.
2. Check that the correct probe is in place in the source.
3. Navigate to the MS Tune workspace, select Tuning Procedures and select Positive Quick Check.
4. The instrument will proceed through a sequence of steps to verify resolution and mass accuracy for TOF MS and TOF MS/MS and will adjust channel alignment.
5. Review the report generated once the quick check is completed.
 - It's advisable to save all the reports for future reference.
6. Select Save Tuning Settings.

Reference cards

Removing the pump head on the ExionLC 2.0 Binary Pump

Applicable models: ExionLC 2.0 Binary Pump

For step-by-step instructions and safety warnings, refer to the User Manual for your system

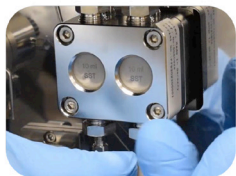


Pre-requisite procedures:

- Turn off the module and unplug it from any power outlets



Remove the front panel



Remove the finger tight fitting from the pump inlet and disconnect the tubing

Quick Reference Guide for Basic Cleaning of Ion Guide Equipped Systems

